

bOS Configurator

[About](#)

[Connecting to bOS Server](#)

[Adding Profile](#)

[Manual Configuration](#)

[Importing Profiles](#)

[Controller registration](#)

[License](#)

[License Edit and Buy](#)

[Edit](#)

[Buy](#)

[General Overview](#)

[Main toolbar](#)

[Main Menu](#)

[Context Menu](#)

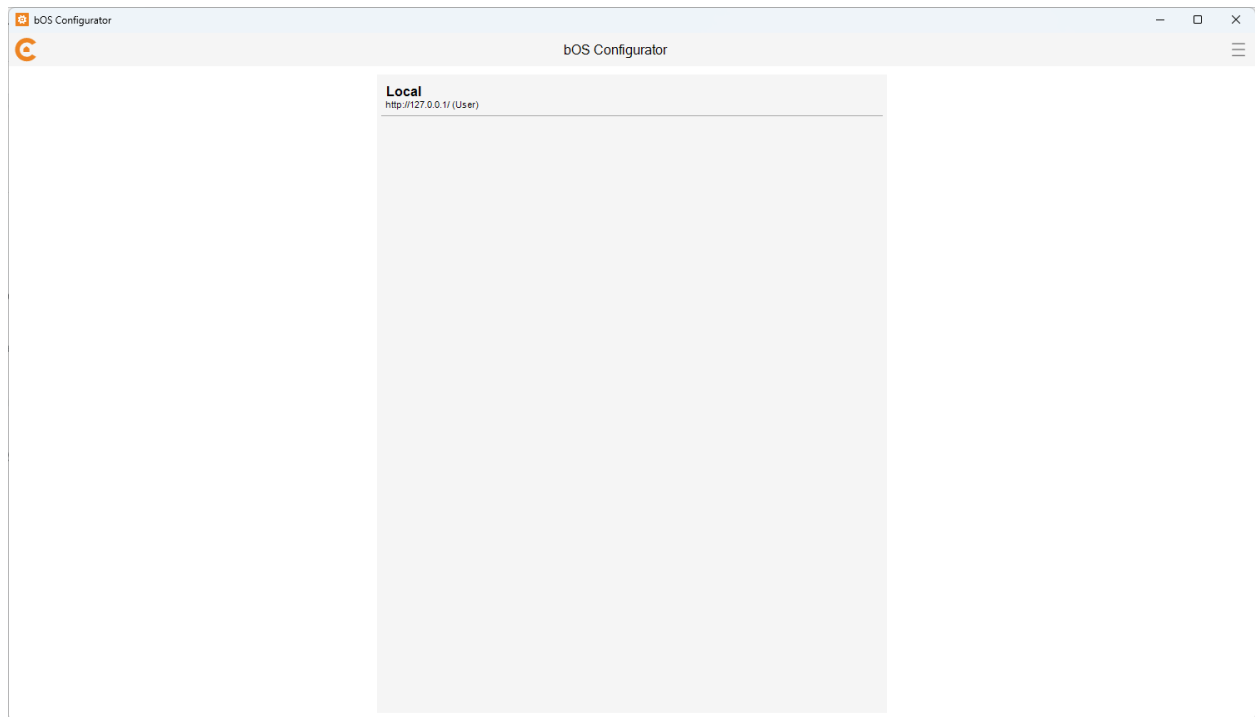
[Node panel](#)

[Log](#)

About

bOS Configurator is an application for creating, managing and editing bOS configurations. This application connects to bOS server and displays the building configuration and other server settings. With bOS Configurator you can manage building user accounts, set device settings, create logical functions and design your custom graphical user interface.

Connecting to bOS Server



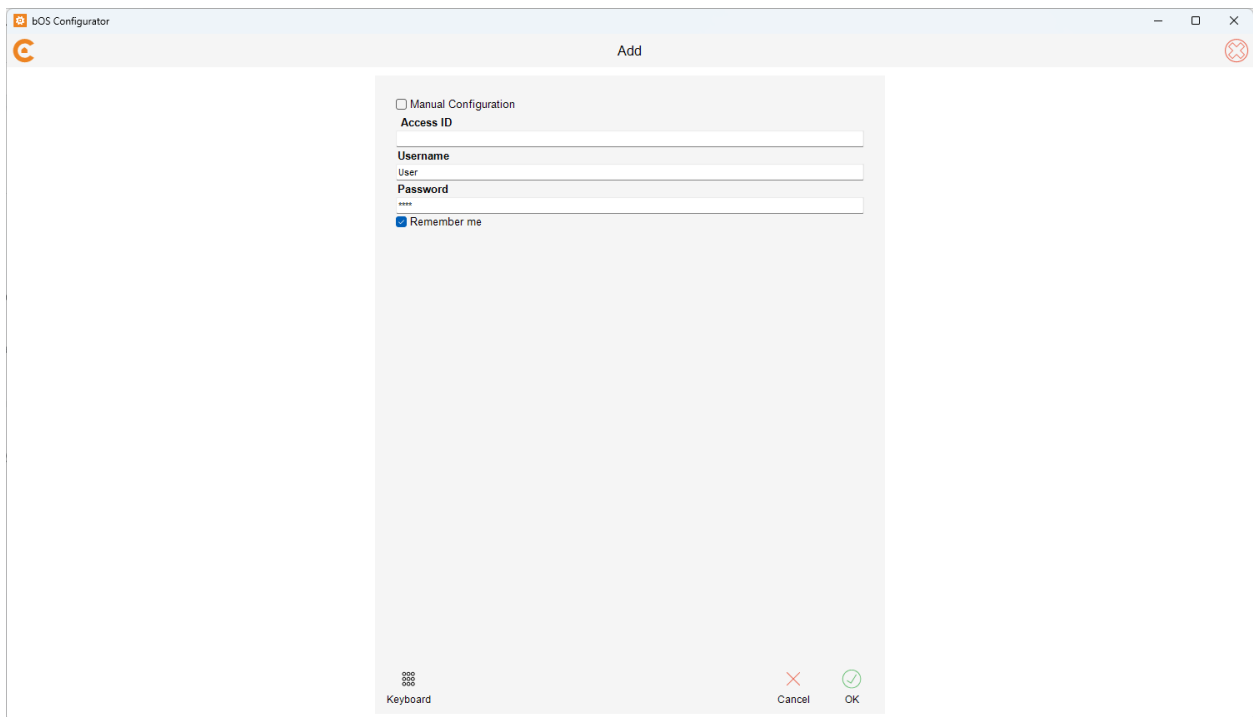
Picture 1: Connection profiles

If hardware is purchased from ComfortClick, all necessary software is already installed and the user connects to the server by adding or editing their profile.

Users Enter their Access ID. By default, the Access ID is the serial number of the ComfortClick controller (e.g. G1223). Serial number is shown on the sticker of the hardware.

If the hardware is not purchased from ComfortClick, connecting to the server is shown in the topic below.

Adding Profile



The screenshot shows a window titled "bOS Configurator" with a sub-window titled "Add". The "Add" window contains a "Manual Configuration" checkbox. Below it are three text input fields: "Access ID", "Username" (with a "User" label), and "Password" (with a "www" label). There is also a "Remember me" checkbox which is checked. At the bottom of the "Add" window, there is a "Keyboard" icon, a "Cancel" button with a red X, and an "OK" button with a green checkmark.

Picture 2: Add profile

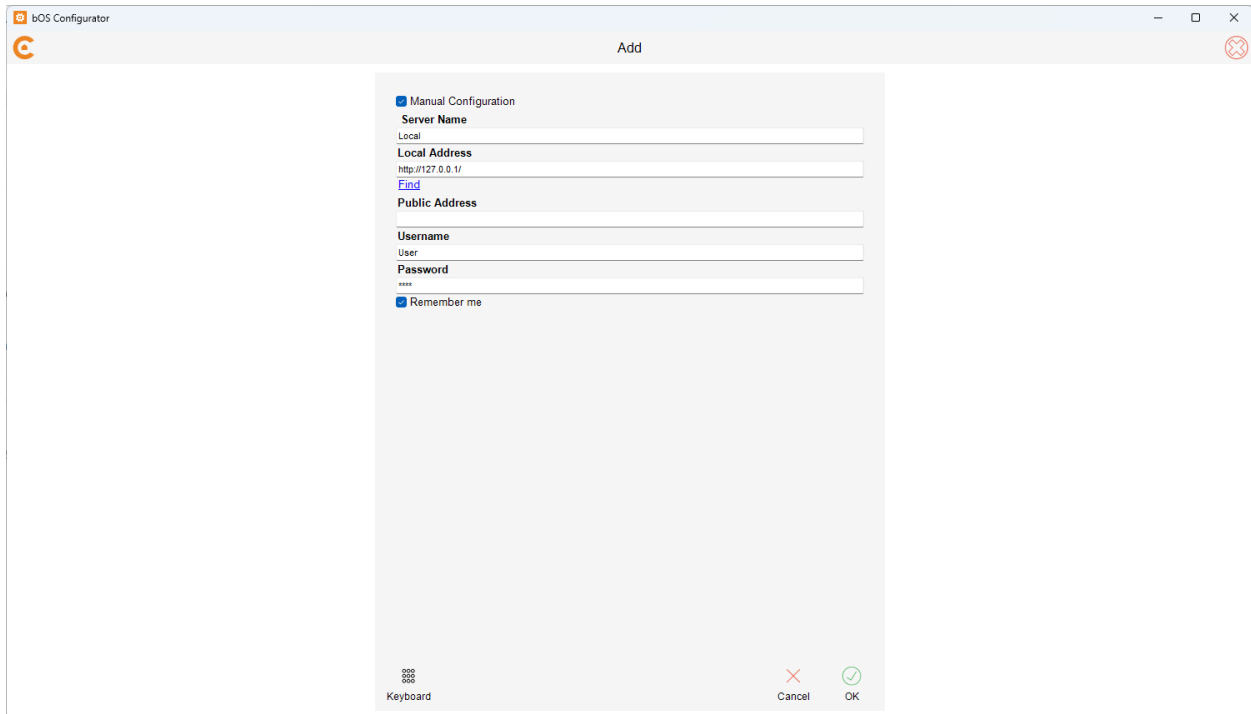
To add registered controller, the following settings needs to be entered:

- Access ID: Unique name for accessing the bOS Server. You can change Access ID by clicking the "Edit" button in bOS Configurator or online in your user profile on www.comfortclick.com.
- Username: Name of the building user (user must have administrator privileges).
- Password: User's password (passwords are case sensitive).

Manual Configuration

When you don't know the Access ID or you are connecting to a newly installed bOS server for the first time, you need to add a profile manually, because the controller is not registered yet.

See the [Controller Registration](#) section to learn how to register a controller.



Picture 3: Add profile manually

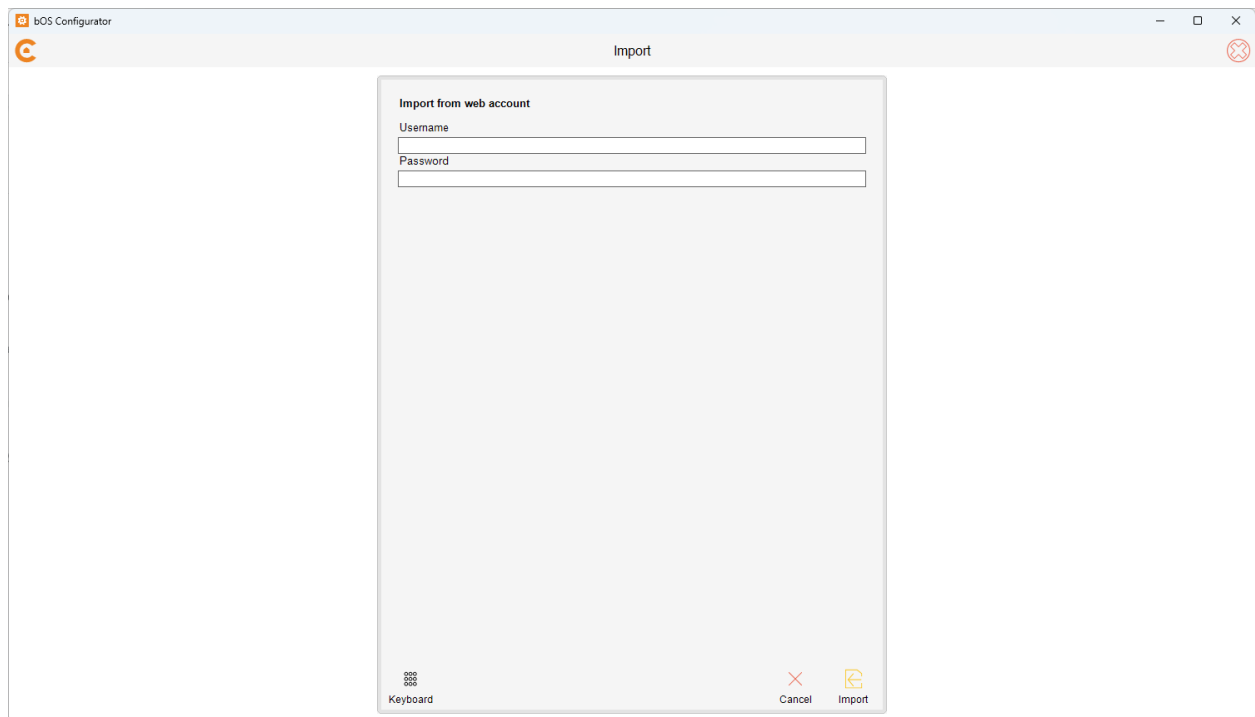
Profile in manual configuration contains the following settings:

- Server Name: Name of the bOS Server (building name e.g. Home, Office, Holiday house...).
- Local Address: The IP address of your bOS server. You can find the servers on the local network by clicking on the Find button. Find button will display a list of bOS servers on your local network. Server address is filled automatically by selecting a server from the list and clicking on the Add button.
- Public Address: If you know the controller's public IP address, you can add it and connect from another network.
- Username: Name of the building user (user must have administrator privileges).
- Password: User's password (passwords are case sensitive).

NOTE: The default Username is "User" and Password is "Pass". It's highly recommended that you change the default password after first login!

- Remember me: Checking the Remember me will remember the user's password.

Importing Profiles



Picture 4: Importing profiles

To import profiles from your ComfortClick web account, controllers must be added to your web account. See the [Controller Registration](#) section to learn how to add controllers to your web account.

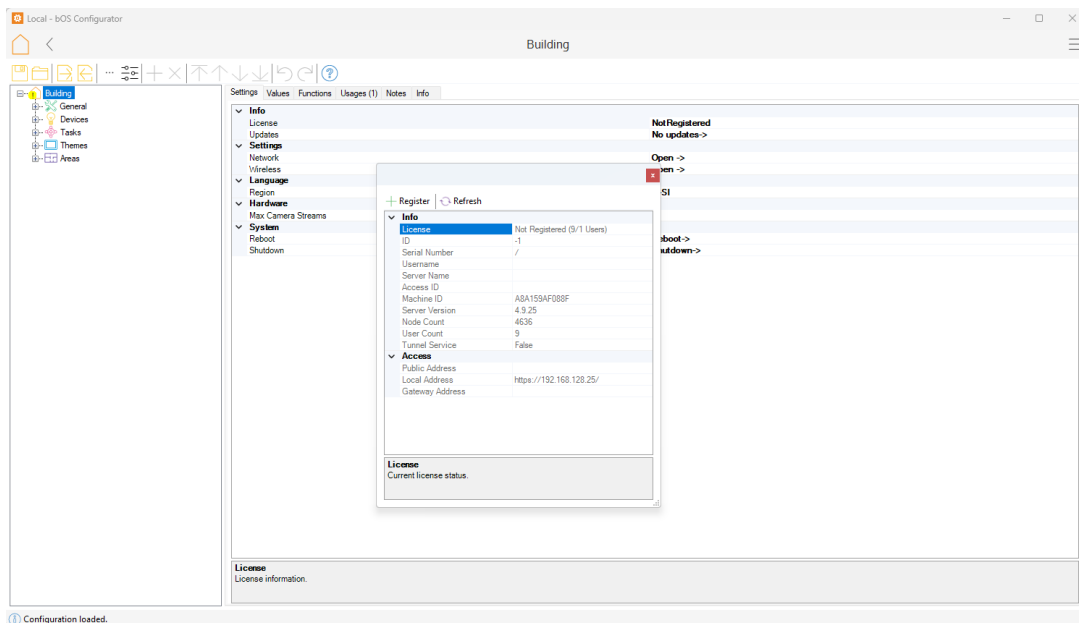
- Username: the username used when registering on ComfortClick web page
- Password: the password used when registering on ComfortClick web page (passwords are case sensitive).

NOTE: When importing profiles from a web account, all controllers linked to your web account will be imported.

Controller registration

After the first connection, the Controller registration should be done. Unregistered Controller has a fully functional bOS Configurator but inactive user interface. Which means you can create your configuration, but you won't be able to use it with bOS Client applications.

With controller registration you will get a FREE license with one user for personal, non-commercial use! More info on the [Licensing](#) page.



Picture 5: Controller registration

To access License information and register a new controller, select “...” at license status, which will open all license and server information and allow you to register a new controller. Clicking the Register button will open the web browser with our official web page www.comfortclick.com. Users must login to their ComfortClick web page user account.



Please sign in



OR

Don't have an account? [Sign up.](#)

Forgot your password? Reset it [here.](#)

Picture 6: ComfortClick login page

After successful login Register Controller form is displayed.

Register Controller

Machine ID

D050999374F7

Username

Server Name*

Access ID*

[Cancel](#)

Picture 7: Register controller form

The following fields are filled automatically:

- Machine ID: Unique string based on your controllers hardware.
- Username: Your Comfortclick username.

The following fields should be filled manually:

- Server Name: Name of your bOS Server. Use a name that will enable you to simply separate between your bOS Servers and choose the one that you want to connect to. (e.g. Home, Office, Holiday House, etc.). You can have several servers with the same name.
- Access ID: Unique name for accessing the bOS Server (e.g. Michael.Home, Company.Location, etc.). This name enables adding profile and accessing your bOS Server, without the need of knowing your IP address. The bOS Client and bOS Configurator will always connect to the right IP address either to local if you are on the same network as bOS Server or to public IP address if you are connecting remotely through the internet.

To complete the registration click on the Register button. Users can then see all current controllers registered under their ComfortClick account.

Controllers



Valid (1/10 Users)
Online



Valid (1/1 Users)
Online



Valid (1/1 Users)
Online



Valid (1/1 Users)
Online



Valid (2/2 Users)
Online



Valid (2/2 Users)
Online



Picture 8: User registered controllers list

Selected controllers can be edited, removed from account or permanently deleted. Editing the controller gives the ability to edit controller access data. Removing the controller is used when

the controller is moved or switched. Permanently removing the controller will also remove the license, so it should only be used when the controller is no longer in use.

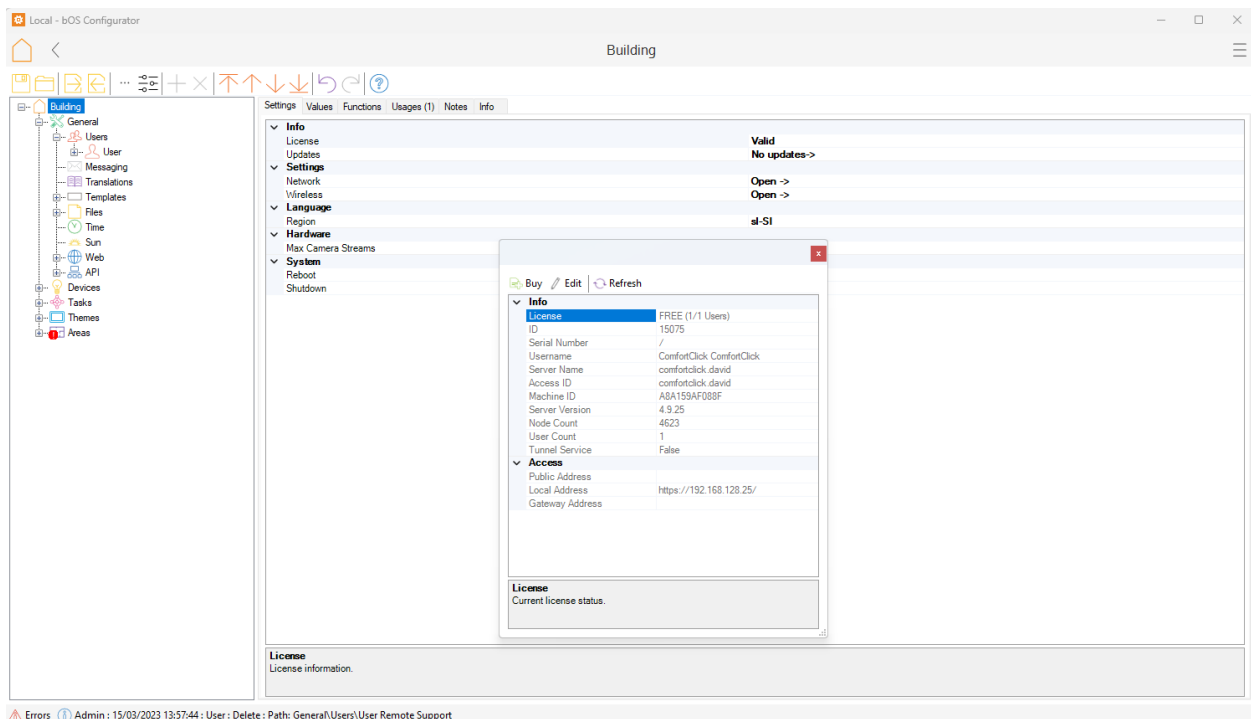
License

We believe ComfortClick bOS is so good that everybody should have it. That's why we give it to you to test it for FREE. [More info about licensing.](#)

In order to obtain bOS FREE License you need to [register](#) your controller.

License Edit and Buy

After controller registration you can buy bOS PRO license or edit controller information.



Picture 9: License edit and buy

By selecting the license status and clicking the "...", license and server information will pop up. Selecting the Buy button will open a web browser and the login page for www.comfortclick.com will be displayed. User must login to his ComfortClick web page user account.



Please sign in



OR

Don't have an account? [Sign up.](#)

Forgot your password? Reset it [here.](#)

Picture 10: ComfortClick login page

After successful login, the controller or server info form is displayed.

Controller Access

ID

6743

Username

Server Name*

Home

Access ID*

CCHome

Controller image Nobena datoteka ni izbrana

Upload image to replace existing one.

Local Address

https://192.168.128.188/

Public Address

IP

Port

Dynamic IP

Picture 11: Controller edit form

Under Edit section the following fields can be changed:

- **Server Name:** Name of your bOS Server. Use a name that will enable you to simply separate between your bOS Servers and choose the one that you want to connect to. (e.g. Home, Office, Holiday House, etc.). You can have several servers with the same name.

- Access ID: Unique name for accessing the bOS Server (e.g. Michael.Home, Company.Location, etc.). This name enables adding profile and accessing your bOS Server, without the need of knowing your IP address.
- Controller image: Adding specific picture to the controller for better transparency if the user has multiple controllers.
- Local Address: Local IP address of your bOS Server. Clients connecting from the same local network will use the Local Address instead of Public Address.
- NOTE: Static IP address should be set on the computer where bOS Server is installed.
- Public Address: Public Address is a public internet address of the controller (e.g. Static IP: 'https://123.123.123.123', Custom Domain: 'https://controller.mydomain.com', Custom Port: 'https://123.123.123.123:4445'). First, you need to manually set the Public Address by clicking the "Set Public Address" button. If you don't have a static public IP, option Dynamic IP should be checked and Public IP will be refreshed automatically when your public IP is changed.
- NOTE: In order to set the Public IP Address, appropriate ports must be open on your router (e.g. port 443 for https).

Buy

Under the Buy section bOS PRO license and additional users can be purchased.

bOS PRO Comfort License

Current License

6743 - Test 1 - FREE (1/1 Users)

PRO License

Removes FREE license notification screen. Enables multiple users. **Includes 2 user accounts.**

Additional Users

Total Users

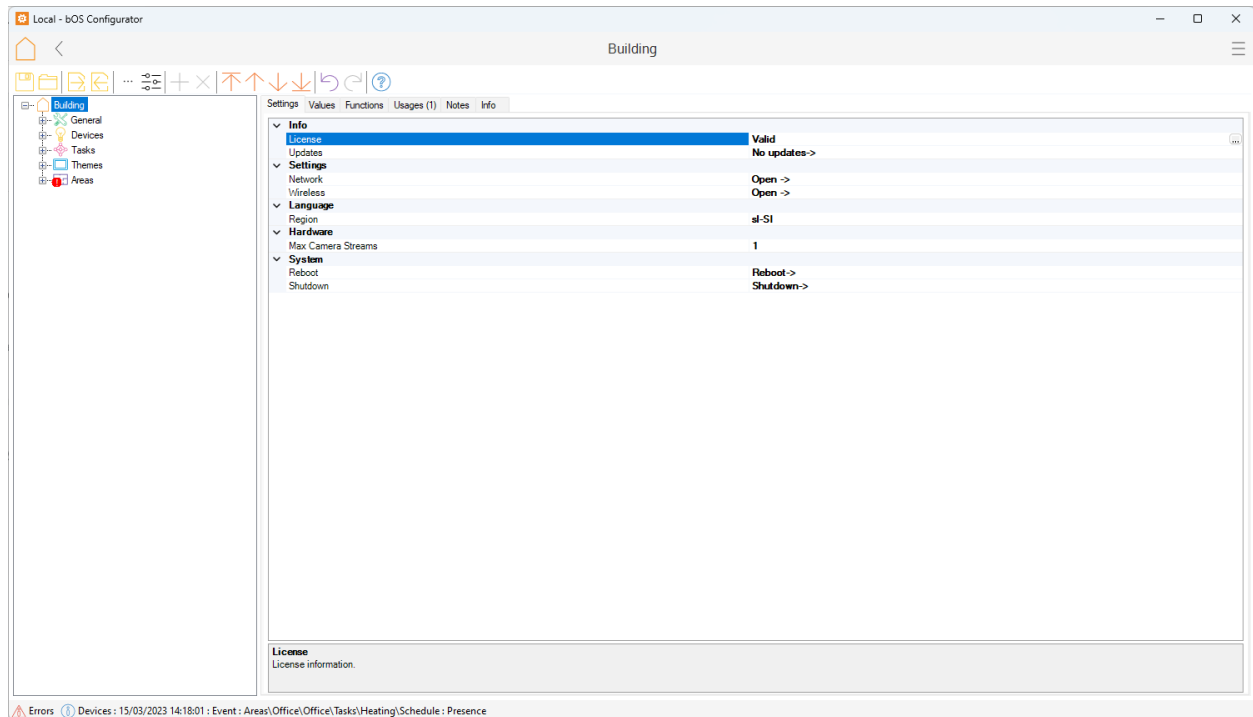
Buy

Cancel

Picture 12: License buy form

General Overview

After connection to bOS server a configuration editing form is displayed.



Picture 13: Configuration form

Main toolbar



Picture 14: Main toolbar

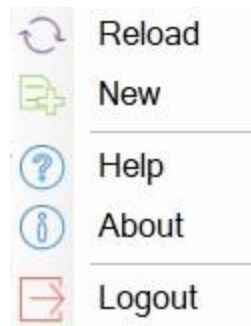
The main toolbar enables the following features:

- **Backup:** Creates a complete server configuration backup including images, sounds, object files and data logs.
- **Restore:** Restores a configuration backup.
- **Export configuration:** Exports bOS configuration to selected location.
- **Import configuration:** Imports bOS configuration from location.
- **Node values:** Displays all values of nodes in the project.
- **Node settings:** Displays currently selected values of the node.
- **Add:** Adds a new node to the configuration.
- **Delete:** Deletes selected node from the configuration.
- **Top:** Moves selected node to the top of the current parent node.

- Move up: Changes the position of the node upwards (enabled only for unsorted nodes).
- Move down: Changes the position of the node downwards (enabled only for unsorted nodes).
- Bottom: Moves selected node to the bottom of the current parent node.
- Undo: Erases the last change done to the configuration reverting it to an older state.
- Redo: Reverses last undo function.
- Help: Opens node help.

Main Menu

To open the Main menu, click on  button in the top right corner.
















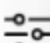



Picture 15: Main menu

- Reload: Restart server and reload the configuration.
- New: Creates a new blank configuration.
- Help: Opens help file with additional information.
- About: Opens about page with a link to our web page and current Configurator version.
- Logout: Logouts from current profile.

Context Menu

With a right mouse click on the desired node a Context menu is opened which allows additional node manipulation within the configuration.

	Add	Ctrl+A
	Delete	Del
	Rename	F2
<hr/>		
	Copy	Ctrl+C
	Paste	Ctrl+V
	Cut	Ctrl+X
<hr/>		
	Move To Top	Ctrl+Shift+Up
	Move Up	Ctrl+Up
	Move Down	Ctrl+Down
	Move To Bottom	Ctrl+Shift+Down
<hr/>		
	Undo	Ctrl+Z
	Redo	Ctrl+Y
<hr/>		
	Export	Ctrl+E
	Import	Ctrl+I
<hr/>		
	Values	F3
	Settings	F4
<hr/>		
	Help	F1

Picture 16: Context menu

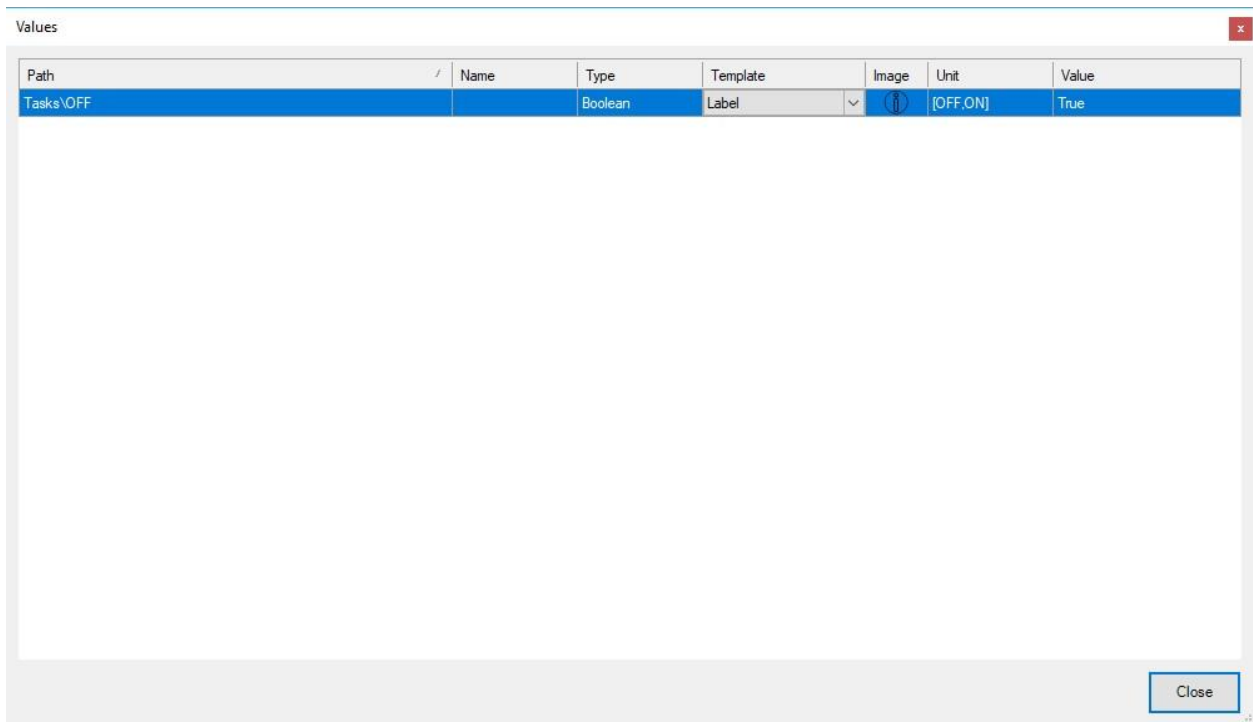
The following features can be selected:

- Add: Adds a new node to the configuration.
- Delete: Deletes selected node from the configuration.
- Copy: Copies selected node to the clipboard.
- Paste: Pastes the node from the clipboard to the selected node.
- Cut: Copies and removes a selected node.
- Move to the top: Moves selected node to the top of the current parent node.
- Move up: Changes the position of the node upwards (enabled only for unsorted nodes).
- Move down: Changes the position of the node downwards (enabled only for unsorted nodes).
- Move to bottom: Moves selected node to the bottom of the current parent node.
- Undo: Erases the last change done to the configuration reverting it to an older state.
- Redo: Reverses last undo function.

- Export: Export selected node and subnodes to a file.
- Import: Import individual node and subnodes from a file.
- Node values: Displays all values of nodes in the project.
- Node settings: Displays currently selected values of the node.
- Help: Opens node help.

NOTE: Value templates must be set for every value in order to use them in scenes, schedules, themes...

- Values: Opens form for editing values of selected node and subnodes where the following value definitions can be set:
 - Template
 - Default icon
 - Units
 - Min/Max values
 - Decimal places...



Picture 17: Values editing form

NOTE: To edit multiple values at once, users can either click and drag through desired values, control & click wanted values. Values can have their definition changed (template, image, unit, value).

Values

Path	Name	Type	Template	Image	Unit	Value
Devices\KNX\Irrigation\Zone 4\Time	Value	Integer	Setpoint		min [0,60] *	2
Devices\KNX\Shades\Blinds\Bedroom\Tilt	Value	Integer	Shades		% [0,100]	0
Devices\KNX\Shades\Blinds\Bedroom\Main	Value	Integer	Shades		% [0,100]	0
Devices\KNX\Irrigation\Zone 6\Time	Value	Integer	Setpoint		min [0,60] *	2
Devices\KNX\Lighting\Dimming\Bedroom ceiling	Value	Integer	Dimmer		% [0,100]	0
Devices\KNX\Heating\Bedroom\Valve position	Value	Integer	Valve Label		%	0
Devices\KNX\Irrigation\Zone 5\Time	Value	Integer	Setpoint		min [0,60] *	2
Devices\KNX\Shades\Shutters\Bedroom	Value	Integer	Shades		% [0,100]	0
Devices\KNX\AC\Bedroom\Fan	Value	Integer	Mode			3
Devices\KNX\Lighting\Dimming\Kitchen table	Value	Integer	Dimmer		% [0,100]	0
Devices\KNX\Lighting\Dimming\Living room ceiling	Value	Integer	Dimmer		% [0,100]	0
Devices\KNX\Lighting\Dimming\Living room standing	Value	Integer	Dimmer		% [0,100]	0
Devices\KNX\Lighting\RGB\Blue	Value	Integer	Dimmer		% [0,100]	0
Devices\KNX\Lighting\RGB\Green	Value	Integer	Dimmer		% [0,100]	0
Devices\KNX\Pool\Lighting\Green	Value	Integer				20
Devices\KNX\Lighting\RGB\White	Value	Integer	Dimmer		% [0,100]	100
Devices\KNX\Irrigation\Zone 1\Time	Value	Integer	Setpoint		min [0,60] *	2
Devices\KNX\Pool\Pumps\Sampling pump\Load	Value	Integer				0
Devices\KNX\AC\Living room\Fan	Value	Integer	Mode			3
Devices\KNX\Pool\Pumps\Main pump\Load	Value	Integer				0
Devices\KNX\Lighting\RGB\Red	Value	Integer	Dimmer		% [0,100]	0

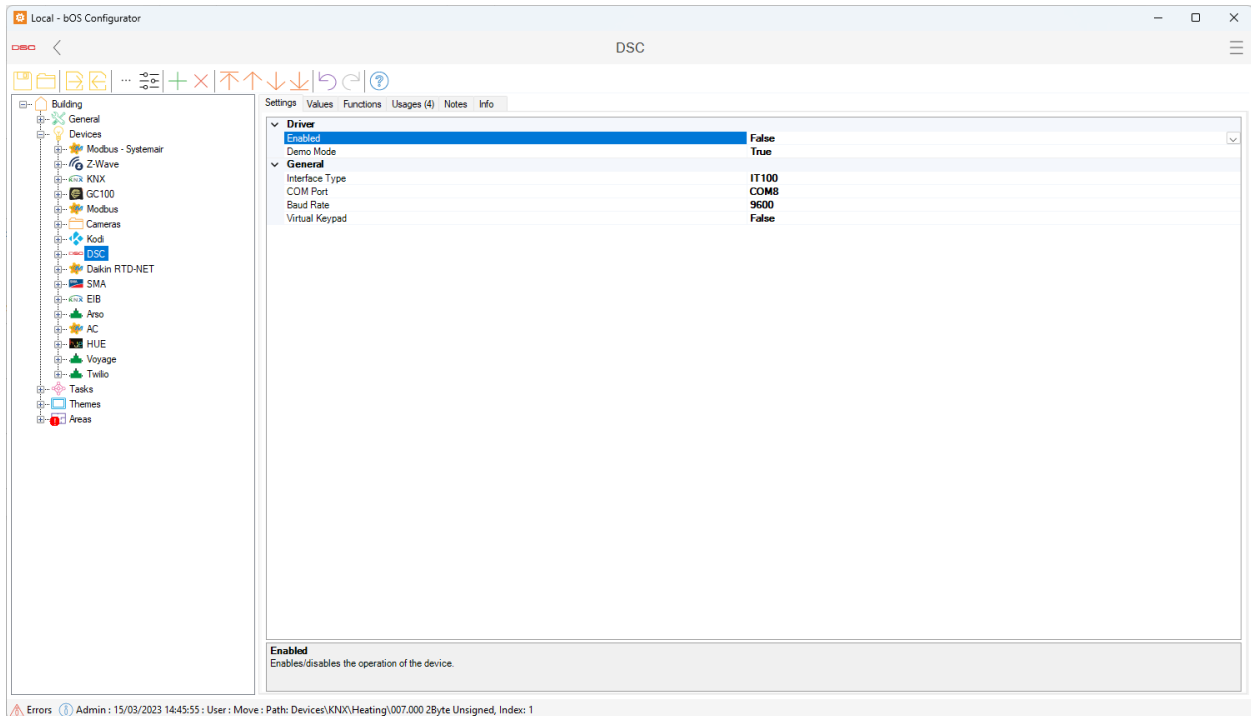
Close

Picture 18: Multi values editing

Node panel

bOS configuration is stored in the form of a configuration tree. Tree contains tree nodes, which represent different configuration objects. The main node of every configuration is the Building node. Building consists of 5 sub nodes. General, Devices, Tasks, Themes and Areas.

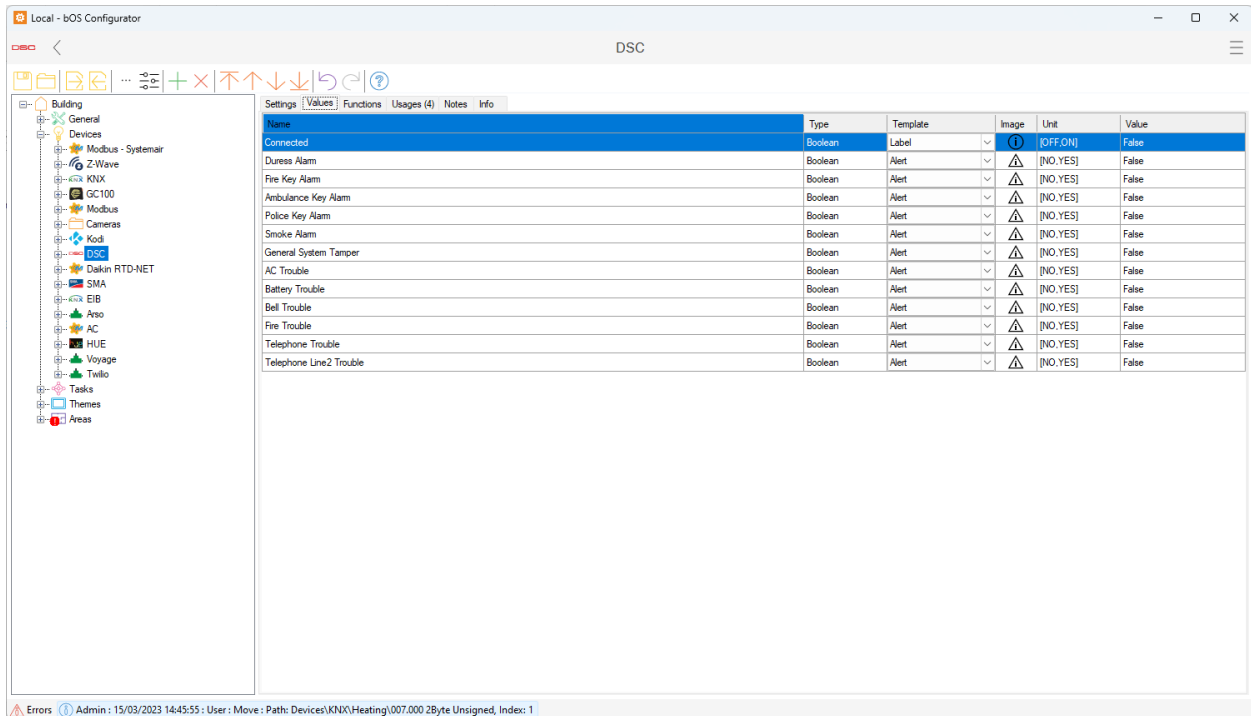
- General node: consists of additional settings and information about the controller (current users connected, all images and sounds, translations, Alexa and Google Home API and more).
- Devices: list of all currently supported devices by Comfortclick. Clicking the add button will add the device into configuration for additional functionality.
- Tasks: list of all tasks and functions that add additional automation for any project.
- Themes: building visual representation for the configuration, user friendly, drag and drop option for quick and easy visual representation.
- Areas: usually used in a hotel installation where duplicates are used to display the same or similar configuration to different devices.



Picture 19: Node panel

Node panel is displayed when node in the configuration tree is selected. The node panel displays the following information tabs:

- **Settings:** List of object's settings. After a change of the setting values, the configuration is uploaded automatically.
 - Detailed descriptions of object settings are displayed by clicking on the node Help button on the node toolbar.
- **Values:** Current values of the object on the server. Change of the value changes the value of the object on the server. You can test your configuration by changing the values (e.g. turning on/off a light). Each value has a value definition:
 - Template
 - Default icon
 - Unit
 - Min/Max values
 - Decimal places...

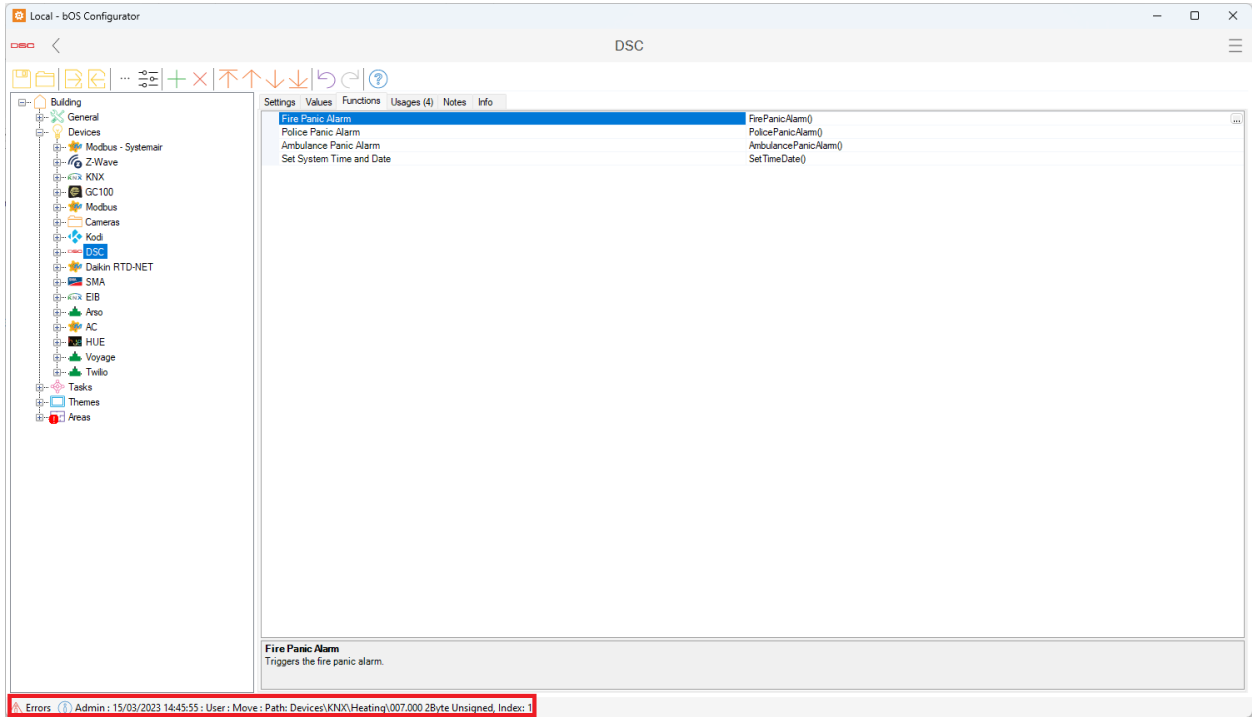


Picture 20: Values

- Functions: Object's functions. Functions of the object on the server can be called from the configurator by clicking on the ... button.
- Usages: Usages of the node in other nodes in the configuration.
- Notes: Custom node notes.
- Info: General node information.

Log

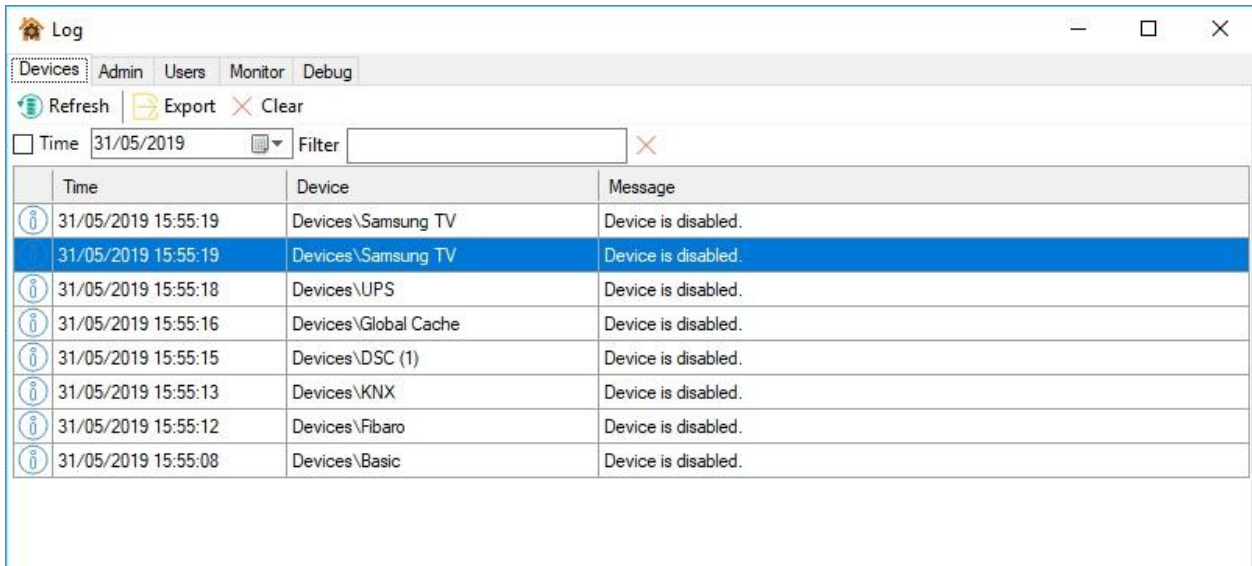
The log window displays multiple server logs. Log button can be found on the bottom left corner. Log contains information about device connection state, server messages, user changes, server monitor and debug tool for troubleshooting.



Picture 21: Log button

Log can be filtered, saved or cleared via buttons in the toolbar.

- Devices: Device log contains events for every device (Connected/Disconnected, errors, etc.)



Picture 22: Devices tab

- Admin: Admin logs changes in configuration. Every change is time labeled.

Time	User	Type	Message
15/03/2023 14:45:55	User	Move	Path: Devices\KNX\Heating\007.000 2Byte Unsigned, Index: 1
15/03/2023 14:32:19	User	Move	Path: Devices\KNX\Heating\007.000 2Byte Unsigned, Index: -1
15/03/2023 13:57:44	User	Delete	Path: General\Users\User Remote Support
15/03/2023 13:57:44	User	Delete	Path: General\Users\T01
15/03/2023 13:57:43	User	Delete	Path: General\Users\Hotel
15/03/2023 13:57:42	User	Delete	Path: General\Users\ComfortClick
15/03/2023 13:57:41	User	Delete	Path: General\Users\Office
15/03/2023 13:57:41	User	Delete	Path: General\Users\George
15/03/2023 13:57:40	User	Delete	Path: General\Users\Children
15/03/2023 13:57:39	User	Delete	Path: General\Users\Parents
15/03/2023 11:00:39	User	Login	IP: 127.0.0.1.
15/03/2023 10:59:18	User	Login	IP: 127.0.0.1.
15/03/2023 10:22:57	User	Login	IP: 127.0.0.1.
15/03/2023 08:46:36	User	SetSetting	Path: General\Users\Parents, Setting: Privileges, Data: Guest
15/03/2023 08:44:33	User	Add	Path: General\Users\User Remote Support, Name: User Remote Support, Data: BOS...
15/03/2023 08:44:10	User	Login	IP: 127.0.0.1.
14/03/2023 11:14:02	User	SetSetting	Path: Devices\KNX, Setting: DeviceAuthenticationCodeIP, Data: ***

Picture 23: Admin tab

- Users: Users Log displays users activity (login, logout, operations...).

Time	User	Type	Message
15/03/2023 11:00:37	User	Login	IP: 127.0.0.1, Device: CC-DAVID, OS: Windows
15/03/2023 10:39:38	User	Logout	Device:
15/03/2023 10:10:05	User	Logout	Device:
15/03/2023 09:13:03	User	SetValue	Object: Building, Name: RemoteSupportActivated, Value: True
15/03/2023 08:46:50	User	Login	IP: 127.0.0.1, Device: CC-DAVID, OS: Windows
15/03/2023 08:46:48	John	Logout	Device: CC-DAVID
15/03/2023 08:46:40	John	Login	IP: 127.0.0.1, Device: CC-DAVID, OS: Windows
15/03/2023 08:46:26	User	Logout	Device: CC-DAVID
15/03/2023 08:46:24	User	Login	IP: 127.0.0.1, Device: CC-DAVID, OS: Windows
15/03/2023 02:00:01	User	Logout	Device:
14/03/2023 11:06:05	User	Login	IP: 127.0.0.1, Device: CC-DAVID, OS: Windows
14/03/2023 10:45:03	User	Login	IP: 127.0.0.1, Device: CC-DAVID, OS: Windows
14/03/2023 09:16:43	User	Login	IP: 127.0.0.1, Device: CC-DAVID, OS: Windows
10/03/2023 08:17:14	User	Login	IP: 127.0.0.1, Device: CC-DAVID, OS: Windows
10/03/2023 08:12:49	User	Login	IP: 127.0.0.1, Device: CC-DAVID, OS: Windows
10/03/2023 08:06:22	User	Logout	Device:
10/03/2023 08:01:44	User	Login	IP: 192.168.128.23, OS: Mozilla/5.0 (Windows NT 10.0; Win64; x64) AppleWebKit/53...

Picture 24: Users tab

- Monitor: The monitor tab displays incoming and outgoing traffic on bOS Server. Traffic can be filtered, saved or cleared via buttons in the toolbar.

Time	Path	Type	Name	Value
10/03/2023 08:11:42	General\Users\User	Value	LastServerMessage	Devices : 10/03/2023 8:11:41 : Event : Ser...
10/03/2023 08:11:42	General\Users\User	Value	LastServerMessage	Devices : 10/03/2023 8:11:41 : Event : Ser...
10/03/2023 08:11:42	General\Users\User	Value	LastServerMessage	Devices : 10/03/2023 8:11:41 : Event : Ser...
10/03/2023 08:11:38	Building	Value	CPUTemperature	-1
10/03/2023 08:11:38	Building	Value	Disk Usage	21
10/03/2023 08:11:38	Building	Value	MemoryUsage	64
10/03/2023 08:11:38	Building	Value	CPUUsage	0
10/03/2023 08:11:36	General\Users\User	Value	LastServerMessage	Devices : 10/03/2023 8:11:35 : Event : Ser...
10/03/2023 08:11:33	Building	Value	CPUTemperature	-1
10/03/2023 08:11:33	Building	Value	Disk Usage	21
10/03/2023 08:11:33	Building	Value	MemoryUsage	64
10/03/2023 08:11:33	Building	Value	CPUUsage	0
10/03/2023 08:11:28	Building	Value	CPUTemperature	-1
10/03/2023 08:11:28	Building	Value	Disk Usage	21
10/03/2023 08:11:28	Building	Value	MemoryUsage	64
10/03/2023 08:11:28	Building	Value	CPUUsage	0

Picture 25: Monitor tab

- Debug: Debug tab displays raw incoming and outgoing traffic and communication between devices and bOS Server. Traffic can be filtered, saved or cleared via buttons in the toolbar

Log

Devices Admin Users Monitor Debug

Record

Refresh Export Clear

Time 07/06/2019 Filter

Time	Path	Type	Name	Value
07/06/2019 12:34:54	Devices\KNX	Write	TUNNELLING_ACK	06-10-04-21-00-0A-04-01-B1-00
07/06/2019 12:34:54	Devices\KNX	Info	Receive	TUNNELLING_REQUEST
07/06/2019 12:34:54	Devices\KNX	Read	Receive	06-10-04-20-00-15-04-01-B1-00-29-00-BC-D...
07/06/2019 12:34:53	Devices\KNX	Write	TUNNELLING_ACK	06-10-04-21-00-0A-04-01-B0-00
07/06/2019 12:34:53	Devices\KNX	Info	Receive	TUNNELLING_REQUEST
07/06/2019 12:34:53	Devices\KNX	Read	Receive	06-10-04-20-00-17-04-01-B0-00-29-00-BC-D...
07/06/2019 12:34:52	Devices\KNX	Write	TUNNELLING_ACK	06-10-04-21-00-0A-04-01-AE-00
07/06/2019 12:34:51	Devices\KNX	Info	Receive	TUNNELLING_REQUEST
07/06/2019 12:34:51	Devices\KNX	Read	Receive	06-10-04-20-00-17-04-01-AE-00-29-00-BC-D0-1
07/06/2019 12:34:50	Devices\KNX	Write	TUNNELLING_ACK	06-10-04-21-00-0A-04-01-AD-00
07/06/2019 12:34:50	Devices\KNX	Info	Receive	TUNNELLING_REQUEST
07/06/2019 12:34:50	Devices\KNX	Read	Receive	06-10-04-20-00-17-04-01-AD-00-29-00-BC-D0-1
07/06/2019 12:34:49	Devices\KNX	Write	TUNNELLING_ACK	06-10-04-21-00-0A-04-01-AC-00
07/06/2019 12:34:49	Devices\KNX	Info	Receive	TUNNELLING_REQUEST

Picture 26: Debug tab